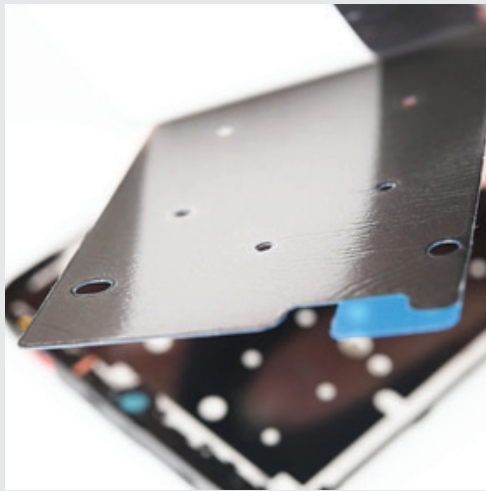


## Technical Data Sheet

### Product Description

EverTherm EVSR600-A-P graphite interface material is a composite of artificial graphite film and foam, which has planar heat conduction and vertical heat insulation, and acts as a buffering capacity.



## Applications

- ✓ Applications
- ✓ Mobile phones
- ✓ Notebook / Laptop Computers
- ✓ TV
- ✓ Thermal module
- ✓ Routers



# EVSR600-A-P

Item	Test	Test method
Foam color	Black	Visual
Total thickness (mm)	0.1mm	ASTM D374
Graphite substrate thickness (mm)	0.025	ASTM D374
Ingredient	PET film, Artificial graphite, Foam	***
Density (g/cm <sup>3</sup> )	1.7~2.0	ASTM D792
Thermal Conductivity @XY(W/m.k)	1500	ASTM E1461
Thermal Conductivity @Z(W/m.k)	>30	ASTM E1461
Heat (J/g.k)	0.85	***
Proper temperature (°C)	-40 to 130	***
RoHS	PASS	IEC 62321
Halogen	PASS	EN14582
REACH	PASS	EN14372
Standard Sheet Size (Note: Other sheet sizes may be available upon request.)		150mm x 150mm

Test fixtures using ASTM D5470. Recorded values include interface thermal resistance. These values are for reference only. The actual application performance is directly related to the applied surface roughness, flatness and pressure.

## CR Technology, Inc

📍 55 Chase St. Methuen,  
Massachusetts 01844

✉ sales@crtechinc.com

☎ 978.681.5300

**DigiKey**

**Note:** The information provided herein is accurate at time of publication. It is the responsibility of the end-user to confirm compliance to their application. All test data is typical. Therefore, these recommendations and data are for reference only and not as a product warranty.