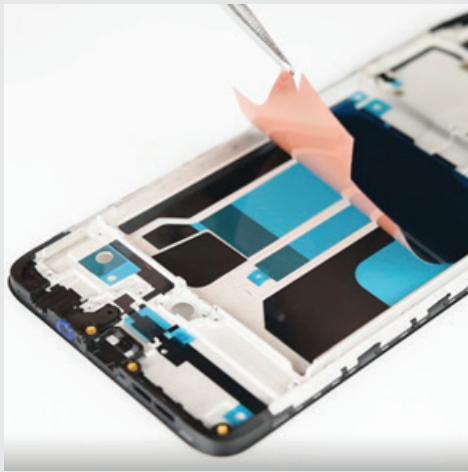


Technical Data Sheet

Product Description

EVSR600-A-W graphite film is a uniquely layered structure with crystal orientation offering super-conductivity in the planar direction. This formulation is wrapped in a white PET film which can be cut/converted into various shapes and sizes.



Applications

- ✓ Applications
- ✓ Mobile phones
- ✓ Notebook / Laptop Computers
- ✓ TV
- ✓ Thermal module
- ✓ Routers



EVSR600-A-W Graphite Film

Item	Test	Test method
Protective film color	White	Visual
Total thickness (mm)	0.065±0.003	ASTM D374
Graphite substrate thickness (mm)	0.025	ASTM D374
Ingredient	White PET film graphite	***
Insulating adhesive	Yes	***
Density (g/cm ³)	1.7~2.0	ASTM D792
Thermal Conductivity @XY(W/m.k)	1500	ASTM E1461
Thermal Conductivity @Z(W/m.k)	>30	ASTM E1461
Heat (J/g.k)	0.85	***
Proper temperature (°C)	-40 to 130	***
RoHS	ⓅPASS	IEC 62321
Halogen	PASS	EN14582
REACH	PASS	EN14372

Test fixtures using ASTM D5470. Recorded values include interface thermal resistance. These values are for reference only. The actual application performance is directly related to the applied surface roughness, flatness and pressure.

CR Technology, Inc

📍 55 Chase St. Methuen,
Massachusetts 01844

✉ sales@crtechinc.com

☎ 978.681.5300

Note: The information provided herein is accurate at time of publication. It is the responsibility of the end-user to confirm compliance to their application. All test data is typical. Therefore, these recommendations and data are for reference only and not as a product warranty.